



# Certificate of Analysis

UElandy Inc.

Room 302, Building 1, No.18& Chunyao Road,

Xiangcheng District, Suzhou,

Jiangsu Province P.R, 215143 China

[www.uelandy.com](http://www.uelandy.com)

Refer to website for regional contact information.

Product Name:	UE-96 DNA Gel Extraction Kit	Lot ID:	221111KE2
Catalog Number:	UE-96-GX-4	Expiration Date:	11/10/2025

## Quality Control

### Electrophoretic Analysis

- Comparison of the Test Sample to a previously tested Standard. Acceptable range for Test Sample is  $\leq \pm 10\%$  of Standard, based upon analysis. The “Standard” is a previously tested and validated sample.
- The recovery of DNA from agar gel is more than 65%.

### Recovery Analysis

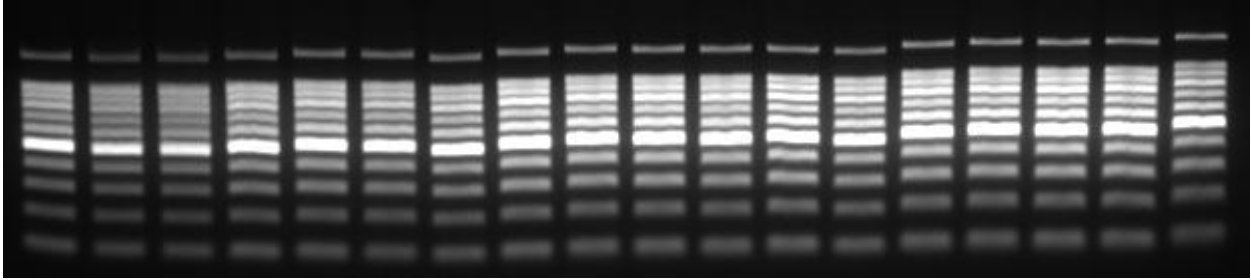
The recovery of DNA from agar gel is more than 65%. Loading 10 $\mu$ l extracted PCR product mixture to the 2% agar gel for electrophoresis, and also loading 3.9  $\mu$ l and 6 $\mu$ l PCR product mixture for 65% and 100% as contrast to to estimate the recovery of purified PCR product by visual examination.

### Gel Image and Test Data

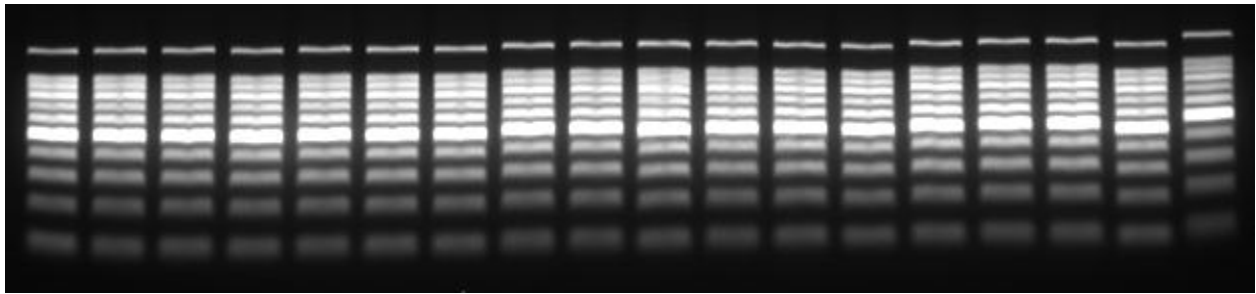
Result									
Performane inspection	Item	lane	number	electrophore sis strip	yield	lane	number	electrophore sis strip	yield
		1-1	STD	✓	65%	2-1	STD	✓	65%
	TEST	1-2	A1	✓	95%	2-2	A6	✓	95%
		1-3	B1	✓	95%	2-3	B6	✓	95%
		1-4	C1	✓	95%	2-4	C6	✓	95%
		1-5	D1	✓	95%	2-5	D6	✓	95%
		1-6	E1	✓	95%	2-6	E6	✓	95%
		1-7	F1	✓	95%	2-7	F6	✓	95%
		1-8	G1	✓	95%	2-8	G6	✓	95%
		1-9	H1	✓	95%	2-9	H6	✓	95%
	STAN DARD	1-10	A1	✓	95%	2-10	A6	✓	95%
		1-11	B1	✓	95%	2-11	B6	✓	95%
		1-12	C1	✓	95%	2-12	C6	✓	95%
		1-13	D1	✓	95%	2-13	D6	✓	95%
		1-14	E1	✓	95%	2-14	E6	✓	95%

		1-15	F1	√	95%	2-15	F6	√	95%
		1-16	G1	√	95%	2-16	G6	√	95%
		1-17	H1	√	95%	2-17	H6	√	95%
		1-18	100%	√	100%	2-18	100%	√	100%
		[Test Sample/Standard] Yield Difference		0%					

1-1	1-2	1-3	1-4	1-5	1-6	1-7	1-8	1-9	1-10	1-11	1-12	1-13	1-14	1-15	1-16	1-17	1-18
-----	-----	-----	-----	-----	-----	-----	-----	-----	------	------	------	------	------	------	------	------	------



2-1	2-2	2-3	2-4	2-5	2-6	2-7	2-8	2-9	2-10	2-11	2-12	2-13	2-14	2-15	2-16	2-17	2-18
-----	-----	-----	-----	-----	-----	-----	-----	-----	------	------	------	------	------	------	------	------	------



UElandy Inc. warrants and represents that all inspections and testing for the article described above have been performed at Uelandy Inc. QC laboratory located on-site at the manufacturing plant. Uelandy Inc. manufacturing facility is located at Room 302, Building 1, No.18& Chunyao Road, Xiangcheng District, Suzhou, Jiangsu Province P.R, 215143 China

(QC Inspector)

xiao na Zhu

(Approver)

Qin Hua Yu